



THE HINDU ANALYSIS

4th March 2024

by saurabh
pandey



THE HINDU



50 per off for today
code- IRUPSC

International Relations

LAUNCHED

Target Prelims 2024

Basics and current affairs

International
Relations

BY Saurabh pandey sir

LINK IN DESCRIPTION

Agriculture for GS

LAUNCHED

Target Prelims 2024

Basics and current affairs

Agriculture for
General studies

BY Saurabh pandey sir



Link in description

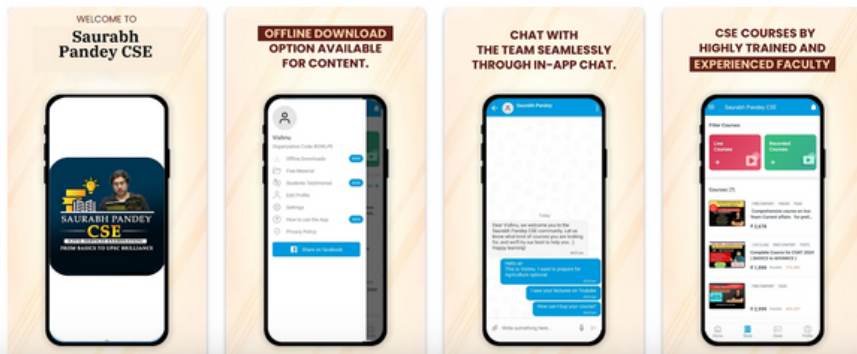
Saurabh Pandey CSE

Saurabh Pandey CSE

4.8★ 73 reviews | 1K+ Downloads | Everyone

Share Add to wishlist

You don't have any devices



App support

For any query msg-
9057921649



Latest GI Tags

- The famous Cuttack Rupa Tarakasi (silver filigree) has been given the Geographical Indication (GI) tag by the Geographical Indications Registry in Chennai.
- “Archaeological evidence suggests that Filigree was incorporated into jewellery as early as 3,500 BCE in Mesopotamia where it is practised even today as Telkari work.
- According to historians, there is every possibility that the Tarakasi work reached Cuttack from Persia through Indonesia some 500 years ago by sea trade.

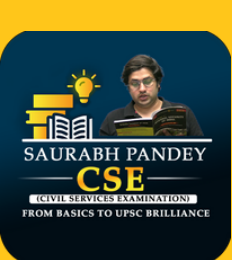
The hindu analysis by saurabh
pandey sir





Assam majuli mask





- **Ratlam Riyawan Lahsun (Garlic), a variety named after Riyawan village in Ratlam district of Madhya Pradesh, also bagged the GI tag along with the Ambaji White Marble, which is formed when limestone is re-crystallised under the earth's crust due to intense pressure and heat.**
- **Tripura Risa Textile, Hyderabad Lac Bangles, Majuli Mask of Assam and the Assam Majuli Manuscript Painting are other products that got GI tag.**
- **The Majuli Mask of Assam is made in different varieties and sizes as they are mainly divided into different categories – Mukha bhaona covers the face; the Lotokoi hanging mask, which is bigger in size, extends to the chest; while Cho Mukha (huge mask) covers the head and body.**



Instrument Landing System (ILS)

- ILS is a standard precision landing aid established by the International Civil Aviation Organisation (ICAO).
- It is used to provide accurate lateral and vertical guidance to aircraft for landing on the runway under normal or adverse weather conditions.
- Interestingly, the need for advanced ILS is now felt in airports which traditionally would not have fog problems, but report visibility challenges due to increased pollution (or smog).

The hindu analysis by saurabh
→
pandey sir



What is an Instrument Landing System(ILS)?

The **ILS** gives pilots instruction and guidance to make safe landings on the runway, even when visibility is limited. The **ILS sends signals to instruments** in the cockpit so that the pilot can stay on a predetermined course to get to the runway.



Mapping

Dana Point is a city located in southern Orange County, California, United States.

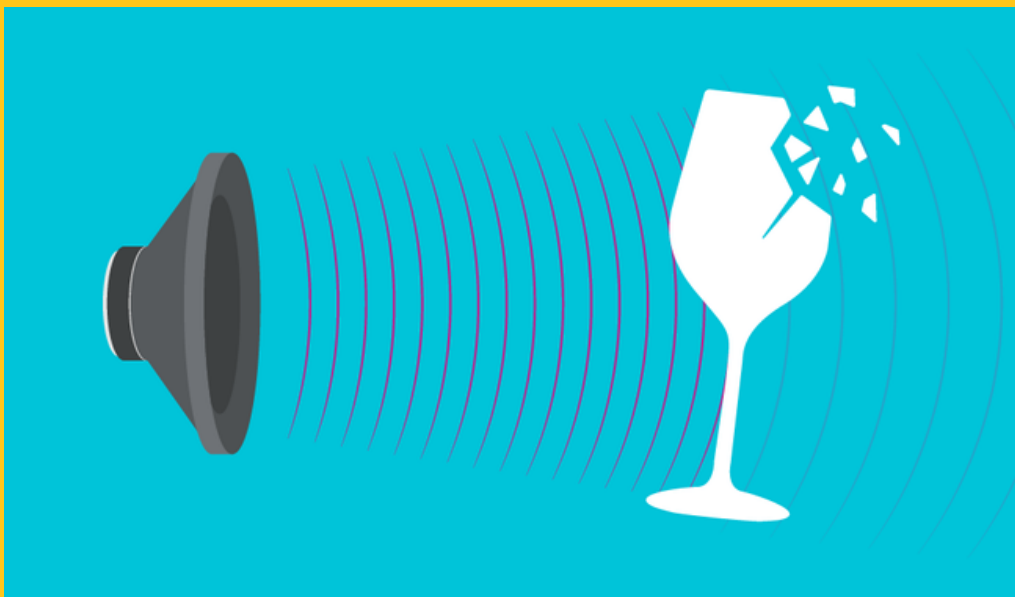


The hindu analysis by saurabh
pandey sir



Resonance.

- It is a phenomenon when the frequency of an externally applied periodic force on a body is equal to its natural frequency, the body readily begins to vibrate with an increased amplitude



The hindu analysis by saurabh
pandey sir

- Resonance can be good or bad, depending on the context. It is good in applications like the quartz crystal in a quartz watch, when playing musical instruments or singing (with the vocal chords), when producing laser light, and in nuclear magnetic resonance (which MRI scanners use to look inside your body).
- You may have noticed the detrimental effects of resonance when you're sitting in a bus, the engine is idling, and you feel the vehicle's metal structure rattling.
- On April 12, 1831, British soldiers were marching on the Broughton Suspension Bridge in England. As they marched in step

The hindu analysis by saurabh
→
pandey sir

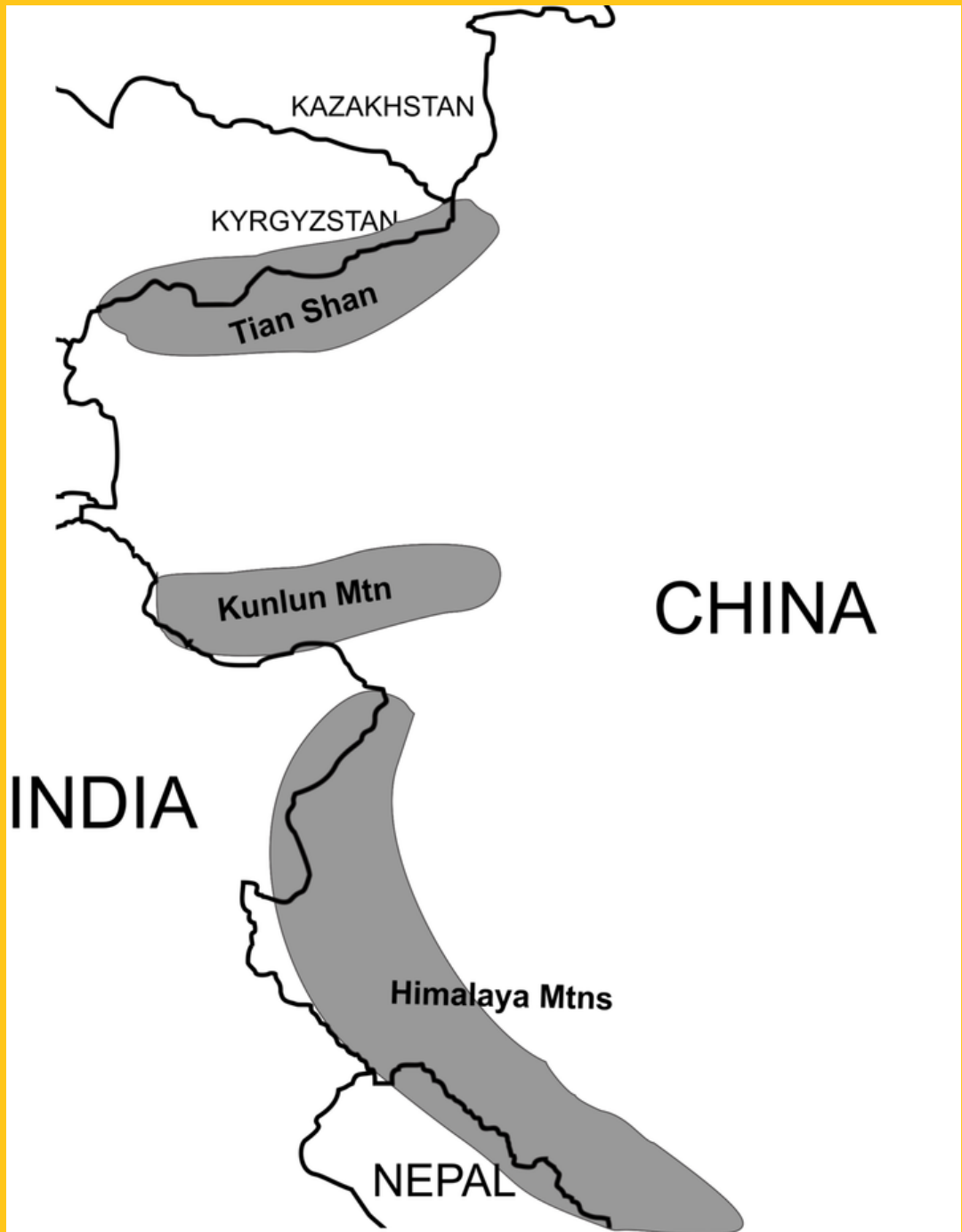


Artificial glacier

- In the Tian-Shan mountains of Kyrgyzstan, villagers have made an artificial glacier to provide water for their drought-hit farms.
-



The hindu analysis by saurabh
pandey sir

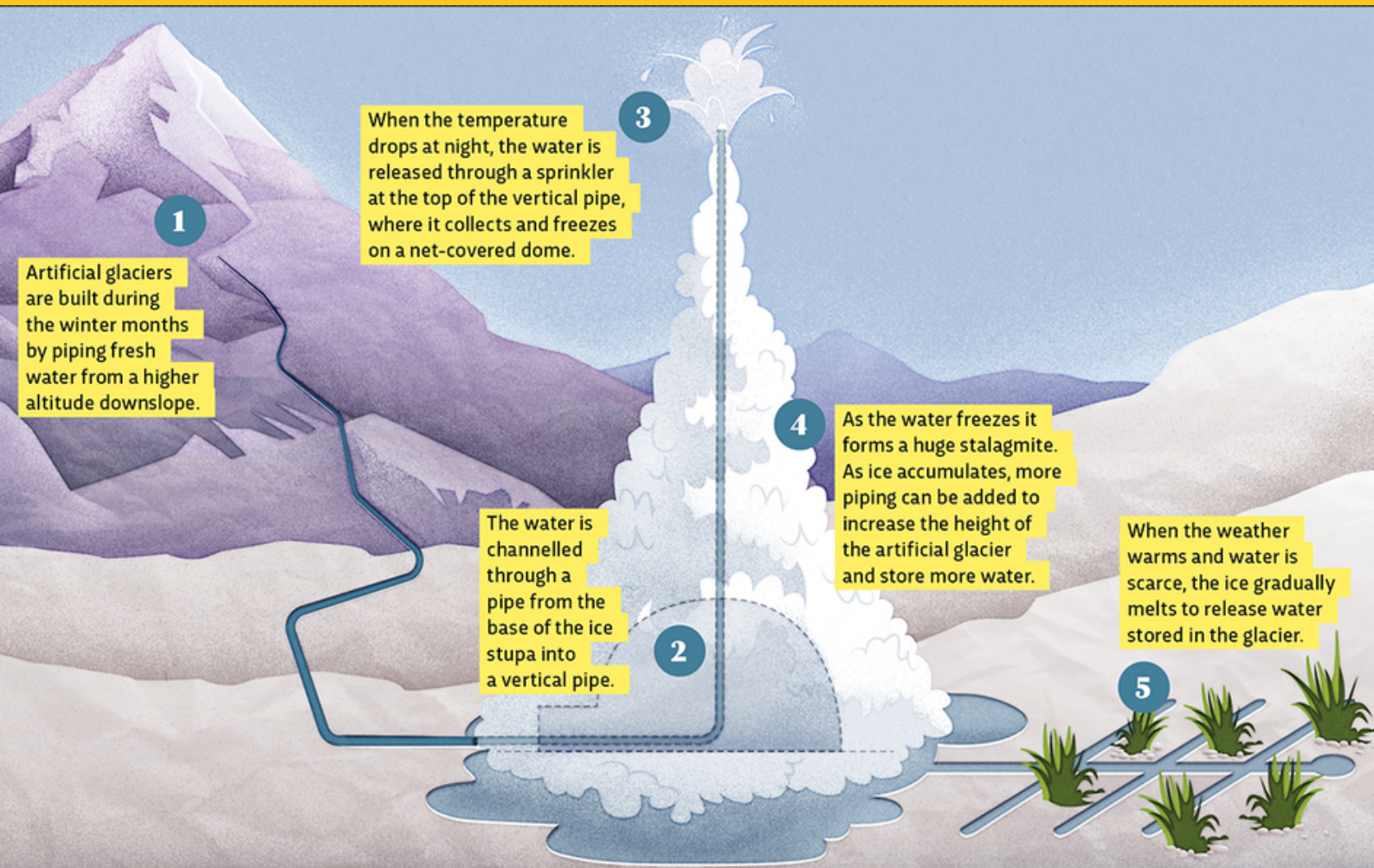


The hindu analysis by saurabh
pandey sir



The hindu analysis by saurabh
pandey sir →







Plastic pollution Himalaya

- Microplastics are formed by the degradation and the fragmentation of large plastic pieces that are improperly disposed of.
- Microplastic deposition and accumulation has been found in the Himalayan mountains, rivers, lakes and streams.
- These microplastics can be trapped in glaciers for a long time and released into rivers during snow melting.
- The Indian Himalayan Region is a critical source of water in the subcontinent, feeding a number of major rivers of India that include the Indus, Ganges and Brahmaputra river systems.

The hindu analysis by saurabh
→
pandey sir



- **Unscientific plastic disposal is causing soil and water pollution in the Indian Himalayan Region and impacting its biodiversity, which is having an adverse impact on the fresh water sources that communities downstream depend on.**
- **Rapid and unplanned urbanisation and changing production and consumption patterns are responsible for the plastic waste crisis in the Indian Himalayan Region.**
- **A quantum jump in tourist footfalls is another reason for exacerbation of the problem.**

•

The hindu analysis by saurabh
→
pandey sir



Legal mandate for waste management

- **Solid Waste Management Rules (SWM) 2016, Plastic Waste Management (PWM) Rules 2016 and Extended Producer Responsibility (EPR) 2022 constitute the regulatory framework for plastic waste management for India (at the country level).**
- **Special needs of hill areas are recognised by the SWM but are not factored in while creating a mandate for both local bodies and producers, importers and brand owners (PIBOs), while PWM and EPR have not even recognised the special needs of the hills**

The hindu analysis by saurabh
→
pandey sir



- Himachal Pradesh has a buy back policy for non-recyclable and single-use plastic waste since 2019, but there is still widespread littering of plastic waste.
- Sikkim banned packaged mineral water use from January 2022 and has a fairly robust regulatory system.
- Under the SWM, PWM and EPR, the task of waste management from collection to its scientific disposal is the duty of local bodies.

The hindu analysis by saurabh
→
pandey sir





- **There is no clarity regarding the mandate to ensure collaboration between local bodies and PIBOs.**
- **There is a need to include traditional institutions within the definition of local bodies when it comes to the Indian Himalayan Region**



Steps needed

- **Empowering local bodies and creating the necessary infrastructure for waste management need immediate attention.**
- **Segregation of waste and the participation of the people in this endeavour with the help of sustained public education campaigns are a sine qua non.**
- **Geographical neutrality of targets under the EPR could be countered if the higher cost of EPR operationalisation in the mountain region is given its due consideration.**



- **The value of the EPR certificate which is earned by a PIBO in the Indian Himalayan Region could be higher than one earned in the rest of the country for every ton of plastic waste processed.**
- **Data gaps in terms of the quantum and quality of waste being generated in the Indian Himalayan Region States should be plugged.**
- **Convergence in existing schemes such as SBM, the Mahatma Gandhi National Rural Employment Guarantee Act and the Finance Commission's grants could be used to create the infrastructure, maintain and run operations.**



- **The Swachh Bharat Kosh Trust set up to facilitate the channelisation of philanthropic contributions and corporate social responsibility funds towards this cause could also be used to augment resources.**
- **The Atal Mission for Rejuvenation and Urban Transformation (AMRUT) and Smart Cities Scheme under which many cities in the Indian Himalayan Region are selected, could also work in convergence on the issue of scientific waste management and making cities in the Indian Himalayan Region free of plastic**



Anti defection law and Party democracy

- . In uncritical terms, the Speaker has said that such intra-party dissent cannot be subject to the punitive provisions of the Tenth Schedule, and the dissenting MLAs cannot be disqualified from the Assembly.
- However, the soundness of this observation can be questioned on the ground that if any dissenting group within a political party wishes to distance itself from such a party, it must ideally merge with another party so as to be able to claim protection under the Tenth Schedule.

The hindu analysis by saurabh
→
pandey sir





- Under the anti-defection law, a faction that splits from its original party cannot claim exemption from disqualification on its own, given that the “split” exception was deleted from the Tenth Schedule in 2003.
- The only exemption available now to legislators moving in groups is that of mergers, which mandatorily require a minimum of two-third members to separate from their political party and merge with another

The hindu analysis by saurabh
pandey sir





- Defections are often engineered on the premise of an absence of inner-party democracy in the original political party of a turncoat legislator.
- To systematically remedy this concern, it is time to first conduct a thorough study of how robust democratic structures and processes are within parties, and, second, usher in statutory regulation that compels political parties to ensure greater inner democracy.

The hindu analysis by saurabh
→
pandey sir



50 per off for today
code- IRUPSC

International Relations

LAUNCHED

Target Prelims 2024

Basics and current affairs

International
Relations

BY Saurabh pandey sir

LINK IN DESCRIPTION

Agriculture for GS

LAUNCHED

Target Prelims 2024

Basics and current affairs

Agriculture for
General studies

BY Saurabh pandey sir



Basic and advance Topics

Launched

Target Prelims 2024

Course on Advance
Topics of Science &
technology

Topics from last 2 yrs
Special focus on
newspapers especially
the hindu



BY Saurabh pandey sir



International Relations

LAUNCHED

Target Prelims 2024

Basics and current affairs

International
Relations

BY Saurabh pandey sir



Link in description

How to watch classes ??

1- Download Saurabh
pandey cse app

2- visit

web.saurabhpandeyupsc.com

For any query msg- **9057921649**



Target Mains 2024

Q "What role local bodies can play in biodiversity conservation??

प्रश्न "जैव विविधता संरक्षण में स्थानीय निकाय क्या भूमिका निभा सकते हैं??

SEND ANSWER- SAURABH PANDEY UPSC

Telegram channel

For any query msg-

9057921649

mail-

saurabhpandey456321@gmail.com

Courses Active

Prelims test series on advanced current affairs (total 50 tests)Saurabh Pandey UPSC: Home (Every Thursday and saturday)

visit saurabhpandeyupsc.com

**For any query msg- 9057921649
mail-
saurabhpandey456321@gmail.com**

Detailed Course on Current Affairs

**MUST FOR
PRELIMS
2024**

CLASS -2 TOPICS

Covered

- Inflation reduction act
- Flue gas desulpharisation
- Red sand dunes
- cheetah population
- GIB
- VIJHIJM port
- parole furough
- BIMSTEC



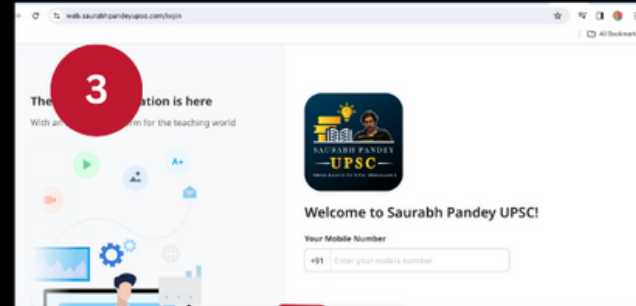
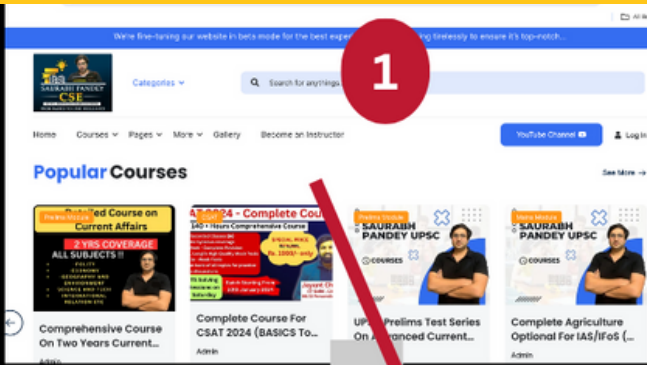
visit -saurabhpandeyupsc.com

For any query msg- 9057921649

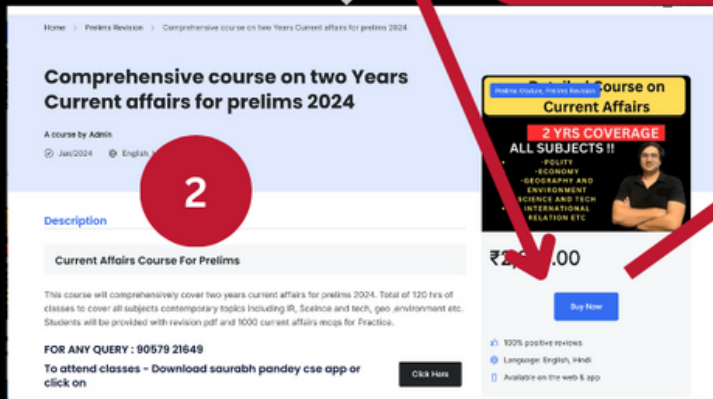
mail-

saurabhpandey456321@gmail.com

HOW TO JOIN??



saurabhpandeyupsc.com



How to join???

For any query msg- 9057921649
mail-
saurabhpandey456321@gmail.com